

ГЕОРГИЙ ДОРОХОВ

ЭПИГРАФЫ //

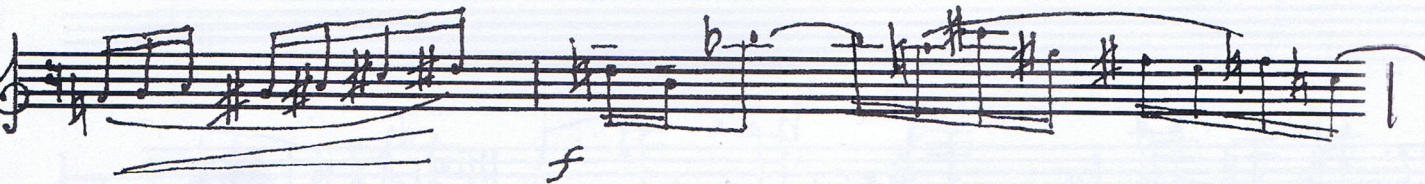
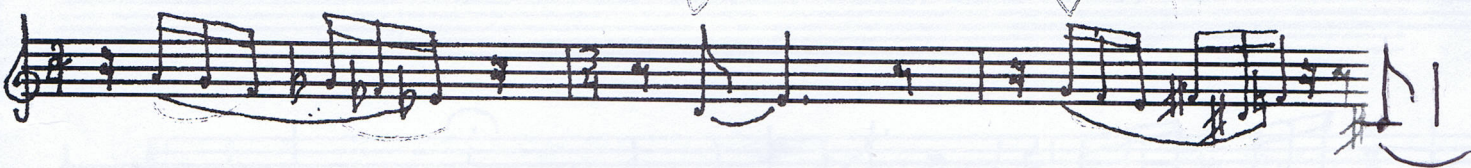
//

ШЕСТЬ ПЬЕС ДЛЯ СКРИПКИ СОЛО



Andante

*p*



Allegretto

pp

Tempo di SARABANDA

p

pp

p

f ff

fff

Prz.

mf mp p

ARCO

pp

Allegretto

p

p

mf f

Handwritten musical notation on a single staff. The key signature is two sharps (F# and C#). The notation includes various rhythmic values, including eighth and sixteenth notes, and rests. A fermata is placed over the final measure. The page number "911" is written in the right margin.

Handwritten musical notation on a single staff. The word "PRESTO" is written above the staff. The key signature is two sharps. The notation features a series of eighth notes, followed by a rest, and then a sequence of notes with fingerings "4 3 2 3" written above. Dynamics include "f" (forte) and accents (>).

Handwritten musical notation on a single staff. The key signature is two sharps. The notation includes eighth notes and rests. Dynamics include "ff" (fortissimo) and "mp" (mezzo-piano). Accents (>) are present under several notes.

Handwritten musical notation on a single staff. The key signature is two sharps. The notation consists of eighth notes and rests. Accents (>) are placed under several notes.

Handwritten musical notation on a single staff. The key signature is two sharps. The notation includes eighth notes and rests. Dynamics include "ff" (fortissimo) and accents (>).

Handwritten musical notation on a single staff. The key signature is two sharps. The notation includes eighth notes and rests. The piece concludes with a final cadence.

Handwritten musical notation on a single staff. It features three measures of music with complex rhythmic patterns and accidentals. Above the first measure, there are handwritten numbers: 1, 2, 3, 1, 2, 3, 1. Above the second measure, there are handwritten numbers: 2, 3, 1. Above the third measure, there are handwritten numbers: 2, 3, 1. The staff is empty below the notes.

Handwritten musical notation on a single staff with a treble clef. It features three measures of music with complex rhythmic patterns and accidentals. Below the first measure is the dynamic marking *mp*. Below the third measure is the dynamic marking *mf*. Above the first measure, there are handwritten numbers: 1, 2, 3, 1, 2, 3, 1. Above the second measure, there are handwritten numbers: 2, 3, 1. Above the third measure, there are handwritten numbers: 2, 3, 1. The staff is empty below the notes.

Handwritten musical notation on a single staff with a treble clef. It features three measures of music with complex rhythmic patterns and accidentals. Above the first measure, there are handwritten numbers: 1, 2, 3, 1, 2, 3, 1. Above the second measure, there are handwritten numbers: 2, 3, 1. Above the third measure, there are handwritten numbers: 2, 3, 1. The staff is empty below the notes.

Handwritten musical notation on a single staff with a treble clef. It features three measures of music with complex rhythmic patterns and accidentals. Below the first measure is the dynamic marking *f*. Below the third measure is the dynamic marking *ff*. Above the first measure, there are handwritten numbers: 1, 2, 3, 1, 2, 3, 1. Above the second measure, there are handwritten numbers: 1, 3, 1. Above the third measure, there are handwritten numbers: 1, 2, 3, 1, 2, 3, 1. The staff is empty below the notes.

Handwritten musical notation on a single staff with a treble clef. It features three measures of music with complex rhythmic patterns and accidentals. Above the first measure, there are handwritten numbers: 1, 2, 3, 1, 2, 3, 1. Above the second measure, there are handwritten numbers: 2, 3, 1. Above the third measure, there are handwritten numbers: 3, 2, 1, 2, 3, 1. The staff is empty below the notes.

Handwritten musical notation on a single staff with a treble clef. It features three measures of music with complex rhythmic patterns and accidentals. Below the first measure is the dynamic marking *fff*. The staff is empty below the notes.



Handwritten musical notation on a single staff. The key signature has one sharp (F#). The notation includes quarter notes, eighth notes, and chords. Dynamic markings include *f* and *ff*. There are slurs and accents over the notes.

Handwritten musical notation on a single staff. The key signature has one sharp (F#). The notation includes chords, eighth notes, and quarter notes. Dynamic markings include *fff*. There are slurs and accents over the notes.

Handwritten musical notation on a single staff. The key signature has one sharp (F#). The notation includes quarter notes and eighth notes. Dynamic marking includes *mp*. There are slurs and accents over the notes.

Handwritten musical notation on a single staff. The key signature has one sharp (F#). The notation includes quarter notes and eighth notes. Dynamic markings include *p*, *pp*, and *ppp*. The word *Pizz.* is written above the staff. There are slurs and accents over the notes.

Empty musical staff.

Empty musical staff.

Empty musical staff.

Empty musical staff.